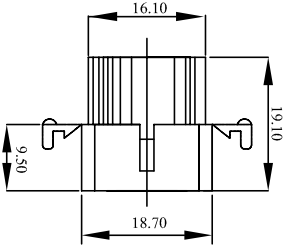
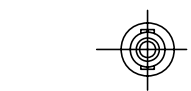
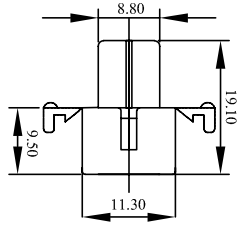
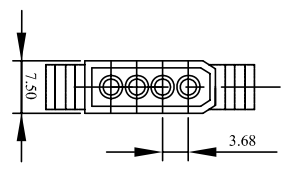


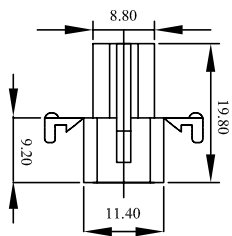
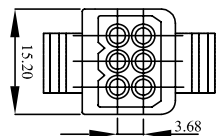
WW158B-F01(5A/250V)



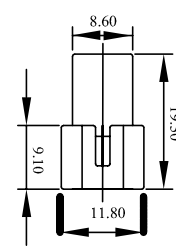
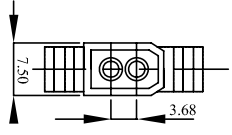
WW158B-F04E(5A/250V)



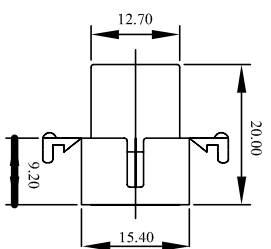
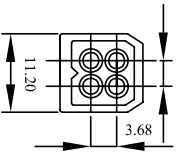
WW158B-F06E(5A/250V)



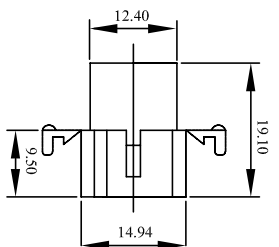
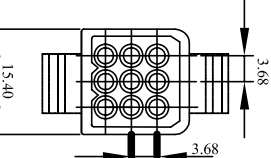
WW158B-F02E(5A/250V)



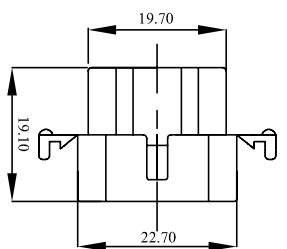
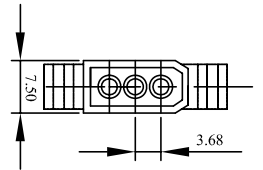
WW158B-F04-1E(10A/250V)



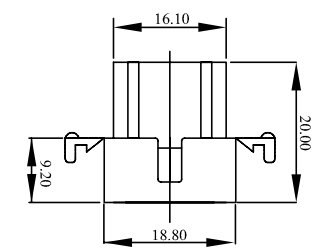
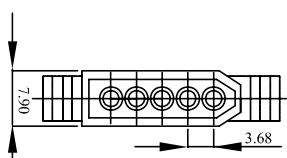
WW158B-F09E(5A/250V)



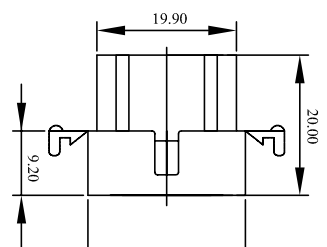
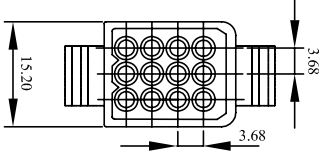
WW158B-F03E(5A/250V)



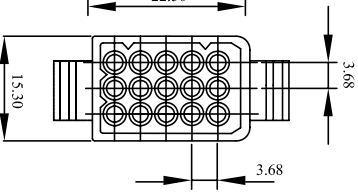
WW158B-F05E(5A/250V)



WW158B-F12-1E(5A/250V)



WW158B-F15E(5A/250V)



Material: Nylon 66 UL94V-2
 Current rating: 5A AC, DC Max
 Voltage Rating: 300V AC, DC Max
 Contact resistance: 15mΩ Max
 Insulation resistance: 1000MΩ Min
 Withstanding voltage: 1500V AC/Minute
 Temperature range: -25°C to +85°C
 Applicable panel thickness: 2 mm max

Rev	Description/Date	Drawn By: Storm.li	Customer:	Third angle projection	Units: mm
△		Checked By: Simmon	Part No.: WW158B-F(E) Series	General Dimension Tolerance	XX ±0.25 XXX ±0.1 XXXX ±0.08
△		Approved By: Tony	Title: Housing		
SGS Report No.: KA/2004/80788/A-2					